

Customer :

customer

Customer part :

customer part

Comment :

Comment

S1=0.03

S2=0.15

Tmax=442

Tp S2=481.0

PI=0.16

HI=4

Sample =1809.7

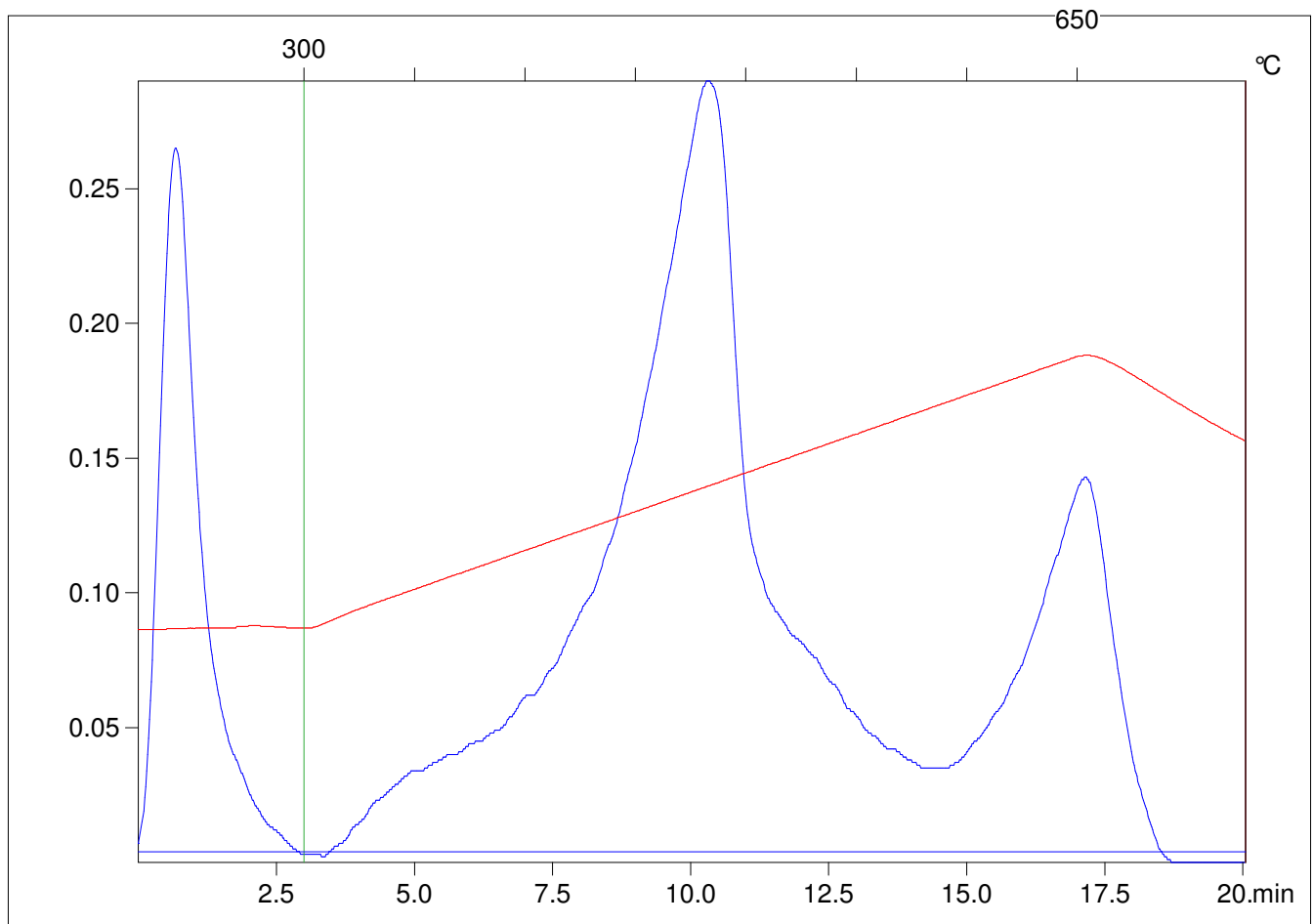
Method =Bulk Rock

Cycle=Basic

KFID(10*9)=1444

Qty =70.7

TOC=4.05



C:\VINC\PK4_1792\PK032.R00 : FID pyrolysis graphic

State

Pyro Status

Oxi Status